



AX-5 Auxiliary Contact

1. Scope of Application

AX-5 auxiliary contact is mainly used in the circuit of AC 50/60Hz, rated heating current 6A, rated voltage AC 415V or DC 130V; assembled with NL1, it is used for distant circuit breaker on/off signal indication.

Conforming standard: GB/T 14048.5 , IEC 60947-5-1, accredited through CE certification.

2. Model and Meanings

AX - 5
 | Design No
 | Auxiliary contact



3. Main Parameters and Technical Performance

3.1 Rated working current under different rated voltages

AC-12: AC415V/3A, AC240V/6A

DC-12: DC130V/1A, DC48V/2A, DC24V/6A

3.2 Life

The working life of auxiliary contact is not lower than 10,000 operations.

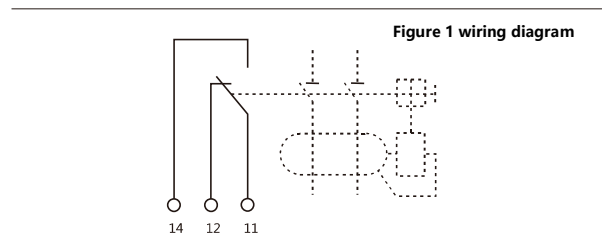
4. Main Parameters and Technical Performance

4.1 Ambient temperature: -35 °C ~ +70 °C

4.2 The atmosphere condition: ≤ 95%

4.3 Pollution degree: II

4.4 Altitude: ≤ 2000m



5. Product assembly and installation

5.1 AX-5 auxiliary contact is a kind of accessories, and can only function after being assembled with the NL1. The assembly and disassembly diagrams are shown below.

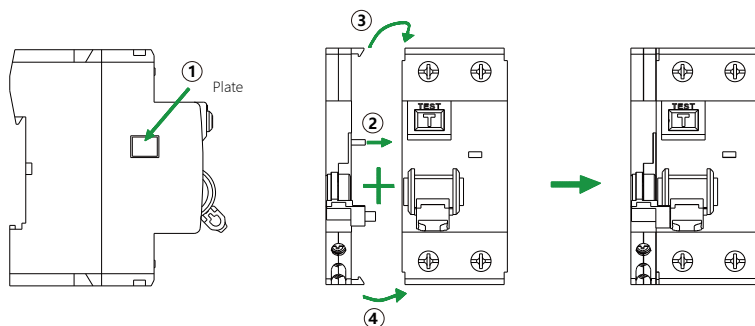


Figure 2

5.2 Remove left cover plate of circuit breaker

6. overall and mounting Dimensions (mm)

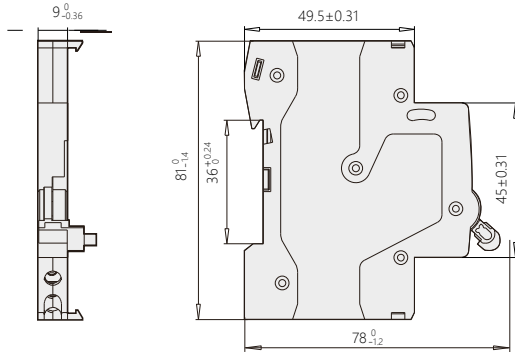


Figure 3

7. Ordering information

7.2 Types and names of product, for example, AX-5 auxiliary contact.

7.2 Quantity on order, for example, 50 units.

7.3 Example for ordering: AX-5 auxiliary contact, 50 units